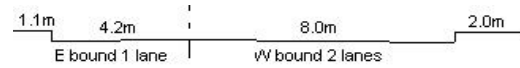
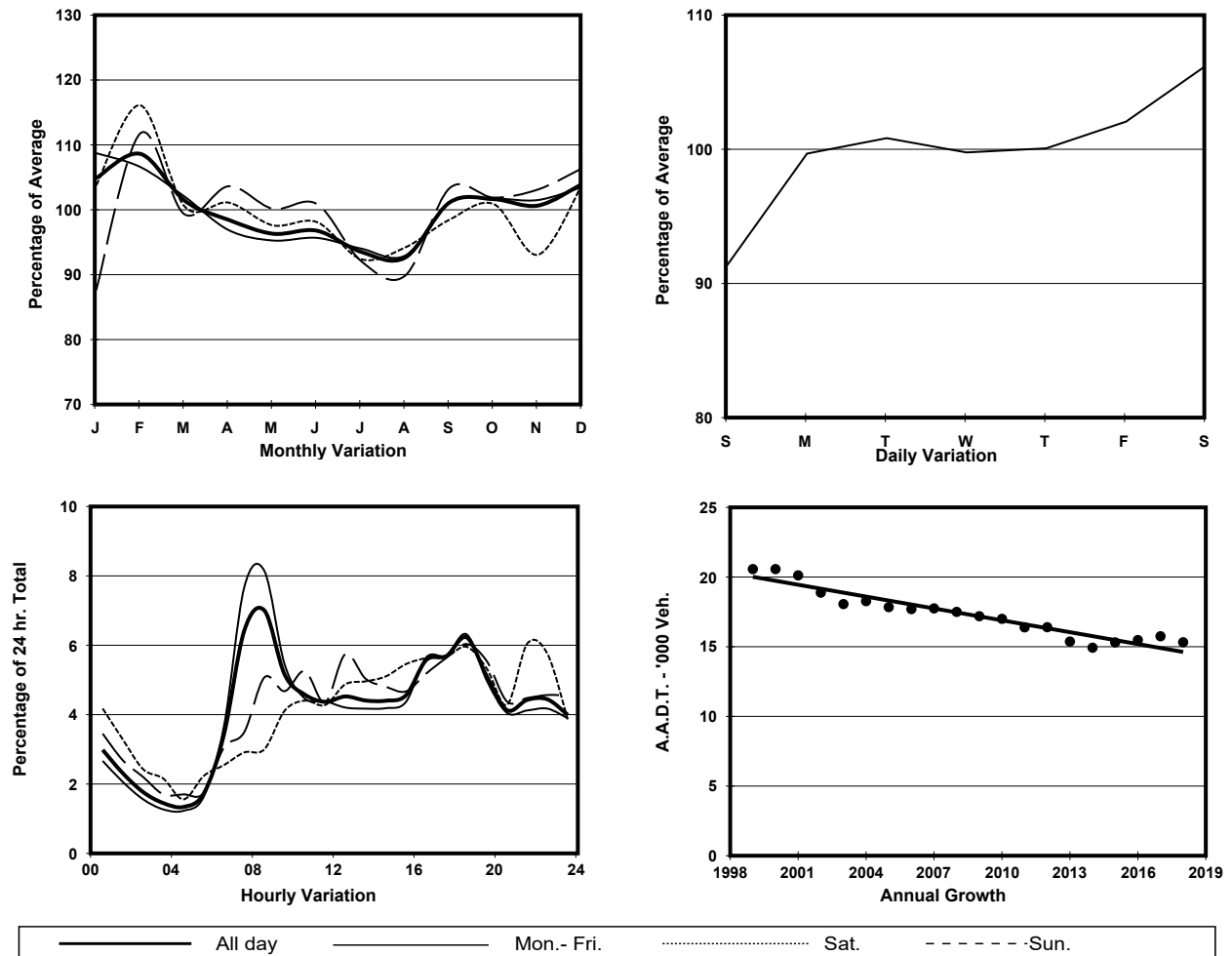


YEAR	2018	LINK	PO LAM RD (from ANDERSON RD to TSUI LAM RD)
CORE STATION	5023		
ROAD NETWORK	MAJOR		
ROAD TYPE	DISTRICT DISTRIBUTOR		



1. TRAFFIC FLOW VARIATION AND GROWTH



2. TRAFFIC CHARACTERISTICS (BY DIRECTION)

Parameter	All - Day	Mon. - Fri.	Sat.	Sun.
EAST BOUND				
A.A.D.T.	6820	6800	7180	6770
R 12 / 24 - %	61.1	62.9	56.5	57.3
R 16 / 24 - %	81.5	82.6	78.3	79.7
AM Peak Hour	0800-0900	0800-0900	0900-1000	0900-1000
One-way flow at AM peak hour	340	380	300	250
T - % (AM)	-	15.9	-	-
PM Peak Hour	1800-1900	1800-1900	1800-1900	1600-1700
One-way flow at PM peak hour	480	520	430	490
T - % (PM)	-	11.2	-	-
Prop.of commercial vehicles - 16 hr.	-	13.7	-	-
WEST BOUND				
A.A.D.T.	8500	8640	9160	7380
R 12 / 24 - %	64.3	66.2	62.7	55.5
R 16 / 24 - %	80.6	81.6	79.4	76
AM Peak Hour	0800-0900	0800-0900	0800-0900	0900-1000
One-way flow at AM peak hour	740	880	540	330
T - % (AM)	-	4.7	-	-
PM Peak Hour	1800-1900	1800-1900	1800-1900	1800-1900
One-way flow at PM peak hour	470	460	550	480
T - % (PM)	-	7.5	-	-
Prop.of commercial vehicles - 16 hr.	-	10.2	-	-

3. OTHER INFORMATION AND COMMENT

4. Vehicle classification and occupancy - Monday to Friday

Time		Class of vehicle									
		Motor Cycle	Private Car	Taxi	Private LB	PLB	Goods veh.		Non Fr. Bus	Fr. Bus	
							Light	M & H		SD	DD
0700-0800	Pro	5.7	41.3	17.2	3.4	5.3	13.8	1.5	3.8	0.0	7.9
	Ocp	1.1	1.5	2.0	8.8	15.7	1.3	1.3	7.9	0.0	27.5
0800-0900 Peak hour	Pro	2.2	43.4	18.5	2.9	3.8	21.7	1.0	1.9	0.0	4.6
	Ocp	1.1	1.3	2.0	3.2	13.3	1.5	1.0	7.8	0.0	42.4
0900-1000	Pro	5.7	34.3	22.4	3.7	4.1	18.4	1.6	3.3	0.0	6.5
	Ocp	1.0	1.3	1.8	5.8	10.0	1.5	1.8	1.5	0.0	27.2
1000-1100	Pro	5.7	28.3	20.1	4.6	7.7	21.1	4.1	1.0	0.0	7.3
	Ocp	1.1	1.5	1.8	1.4	5.1	1.3	1.1	1.0	0.0	20.7
1100-1200	Pro	1.8	30.6	21.8	2.9	4.7	25.3	3.5	0.6	0.0	8.7
	Ocp	1.0	1.2	1.8	2.2	6.4	1.6	1.7	2.0	0.0	20.3
1200-1300	Pro	1.9	29.8	26.0	3.2	5.7	19.7	3.2	1.3	0.0	9.4
	Ocp	1.0	1.6	1.8	6.6	8.9	1.8	1.2	21.0	0.0	24.1
1300-1400	Pro	1.5	22.7	23.4	3.7	7.3	27.1	1.5	1.5	0.0	11.5
	Ocp	1.0	1.6	2.1	4.8	10.8	1.5	1.0	5.5	0.0	21.1
1400-1500	Pro	3.3	19.8	20.5	1.3	6.0	29.8	7.9	2.0	0.0	9.4
	Ocp	1.2	1.4	1.5	3.0	6.1	1.6	1.8	1.7	0.0	23.4
1500-1600	Pro	3.8	27.9	20.3	5.1	3.8	23.5	5.7	0.6	0.2	9.2
	Ocp	1.0	1.3	1.6	7.5	7.0	1.5	1.8	2.0	1.0	16.9
1600-1700	Pro	3.9	32.4	24.2	5.3	4.4	17.4	2.4	2.9	0.1	7.0
	Ocp	1.3	1.5	1.5	3.3	13.8	1.6	1.4	7.5	1.0	32.2
1700-1800	Pro	8.9	25.4	25.9	3.8	4.2	21.6	1.4	1.9	0.0	6.9
	Ocp	1.0	1.6	1.7	2.0	11.4	1.5	1.7	2.0	0.0	36.3
1800-1900	Pro	5.8	39.1	24.7	0.8	4.9	15.6	1.2	1.2	0.0	6.6
	Ocp	1.1	1.4	1.6	1.5	10.0	1.3	1.0	3.3	0.0	44.7
1900-2000	Pro	8.3	43.5	20.3	0.9	4.2	9.7	1.4	2.8	0.0	8.9
	Ocp	1.1	1.3	1.7	1.5	10.9	1.5	1.0	1.2	0.0	23.5
2000-2100	Pro	5.2	45.0	26.1	0.0	5.2	7.8	0.0	0.7	0.0	10.1
	Ocp	1.0	1.4	1.6	0.0	11.8	1.3	0.0	1.0	0.0	21.0
2100-2200	Pro	5.7	36.1	38.3	0.0	4.6	7.4	0.6	0.0	0.0	7.3
	Ocp	1.2	1.6	1.8	0.0	7.0	1.5	1.0	0.0	0.0	21.7
2200-2300	Pro	5.5	40.1	36.8	0.0	3.8	4.4	0.6	0.6	0.0	8.2
	Ocp	1.0	1.4	1.7	0.0	6.9	1.0	1.0	1.0	0.0	18.8
16 hours	Pro	4.8	34.7	23.7	2.6	4.9	17.5	2.2	1.8	0.1	7.8
	Ocp	1.1	1.4	1.7	4.3	9.9	1.5	1.4	4.9	1.0	26.4

Legend

Pro. Proportion of vehicles in % (Sum may not add up to 100% due to figure rounding)*

Ocp. Average occupancy of vehicles including both driver and passengers*

M&H Medium and Heavy

***** All traffic data are collected from combined bounds except for one way traffic